

ILMEA Senior HS Band Audition Scales

Rev 7/2011

Bassoon, Trombone & Euphonium B.C.

The image displays 12 staves of musical notation for bassoon, trombone, and euphonium. Each staff represents a scale in a specific key signature, all in 4/4 time. The scales are as follows:

- Staff 1: B-flat major (one flat)
- Staff 2: B-flat minor (two flats)
- Staff 3: C major (no sharps or flats)
- Staff 4: C minor (no sharps or flats)
- Staff 5: D-flat major (two flats)
- Staff 6: D-flat minor (three flats)
- Staff 7: D major (two sharps)
- Staff 8: D minor (no sharps or flats)
- Staff 9: E-flat major (three flats)
- Staff 10: E-flat minor (four flats)
- Staff 11: E major (one sharp)
- Staff 12: E minor (no sharps or flats)

The notation includes various rhythmic patterns such as eighth and sixteenth notes, often grouped with slurs. Some staves include dynamic markings like 'p' (piano) and 'f' (forte). The final staff concludes with a double bar line.

Trombone

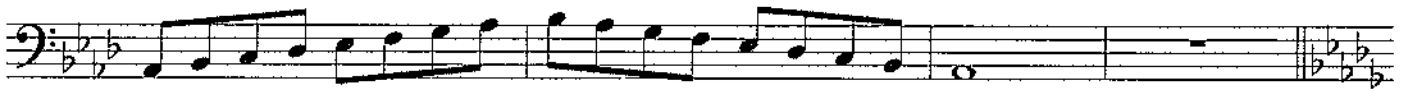
BHS Bands Audition Scales



5



9



13



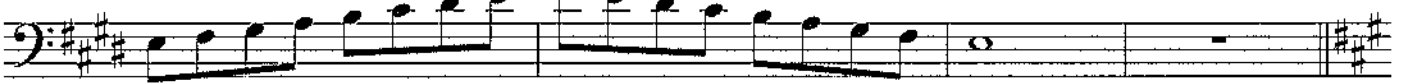
17



21



25



29



Trombone

33



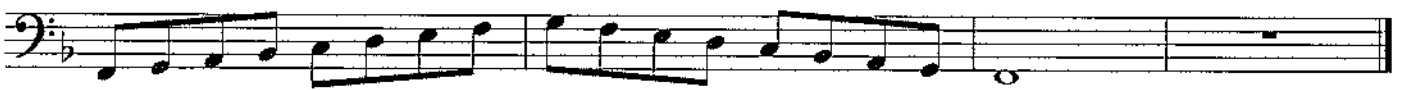
36



41



45



Lyrical Etude 2019

Trombone

Adagio ♩ = 76

mp f

5 p ff mp

9

12 mp mf

15 f

Trombone &
Euphonium BC

BHS Technical Etude 2019

Waltz-like $\text{♩} = 160$

2 3 4 5 6 7

p

8 9 10 11 12 13

f mp

14 15 16 17 18 19

f p f p f

20 21 22 23 24

p mp mp

25 26 27 28 29

mp f mp

30 31 32 33

f mp f mp

34 35 36 37

f ff