

ILMEA Senior HS Band Audition Scales

Rev 7/2011

Bassoon, Trombone & Euphonium B.C.

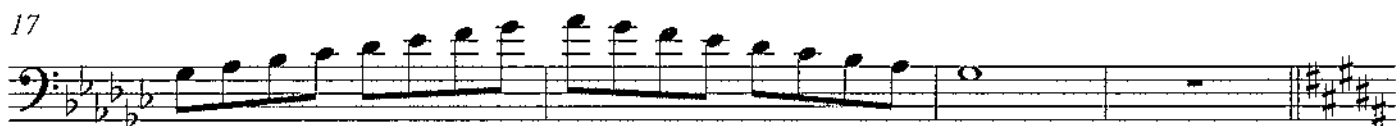
The image displays 12 staves of musical notation for bassoon, trombone, and euphonium. Each staff represents a scale in a different key, starting on the second line of the bass clef (B2). The scales are as follows:

- Staff 1: B-flat major (2 flats)
- Staff 2: B-flat minor (2 flats)
- Staff 3: C major (no sharps or flats)
- Staff 4: C minor (no sharps or flats)
- Staff 5: D-flat major (2 flats)
- Staff 6: D-flat minor (2 flats)
- Staff 7: D major (2 sharps)
- Staff 8: D minor (2 sharps)
- Staff 9: E-flat major (3 flats)
- Staff 10: E-flat minor (3 flats)
- Staff 11: E major (1 sharp)
- Staff 12: E minor (1 sharp)

The notation includes a bass clef, a 4/4 time signature, and various note values (quarter, eighth, and sixteenth notes) with stems and beams. The final staff concludes with a double bar line.

Euphonium

BHS Bands Audition Scales



Euphonium

33



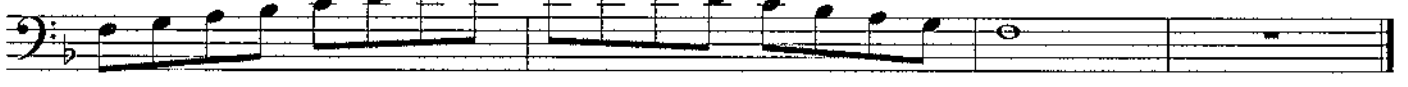
36



41



45



Euphonium

Lyrical Etude 2019

Adagio ♩ = 76

mp *f*

5 *p* *ff* *mp*

9

12 *mp* *mf*

15 *f*

Trombone &
Euphonium BC

BHS Technical Etude 2019

Waltz-like $\text{♩} = 160$

2 3 4 5 6 7

8 9 10 11 12 13

14 15 16 17 18 19

20 21 22 23 24

25 26 27 28 29

30 31 32 33

34 35 36 37

p

f mp

f p f p f

p mp mp mp

mp f mp f mp

f ff